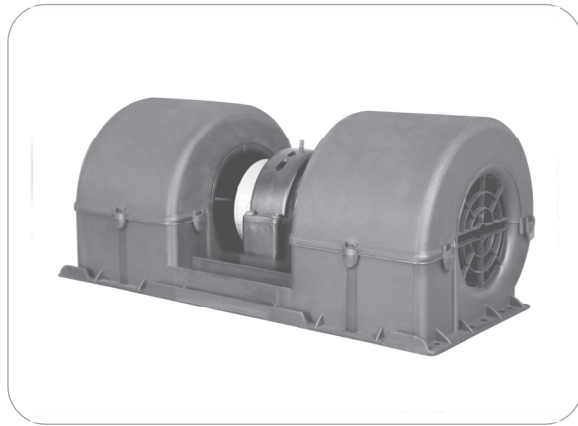
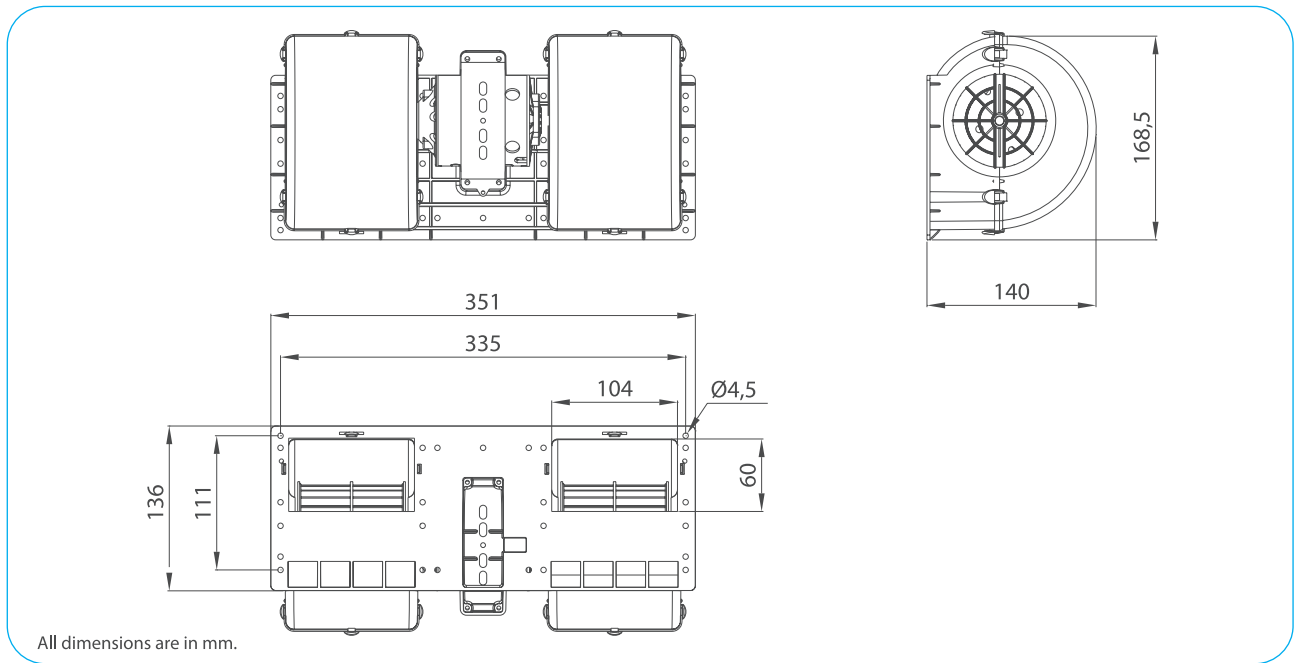


| Part Numbers                | Specifications  | Applications | Features   | Options   |
|-----------------------------|---|--------------|--|---|
| <b>6401568</b><br>ONE SPEED | <b>WIDTH 350 mm</b><br><b>900 m<sup>3</sup>/h</b><br><b>24V</b> | HVAC Systems | High Pressure<br>Silent Operation<br>High Efficiency | PWM Speed Control<br>EMC (Certified)<br>Thermal Protector<br>(LL) Long Life Version |



|                   |                    |       |
|-------------------|--------------------|-------|
| Test Voltage      | V                  | 26,0  |
| Nominal Current   | A                  | 6,5   |
| Nominal Speed     | rpm                | 3.250 |
| Max. St. Pressure | mmH <sub>2</sub> O | 46,0  |
| Max. Airflow      | m <sup>3</sup> /h  | 860   |
| Weight            | kg                 | 2,0   |



| TEST VOLTAGE = 26,0 VDC | Static Pressure     | Air Flow Rate     | Current |
|-------------------------|---------------------|-------------------|---------|
|                         | mm H <sub>2</sub> O | m <sup>3</sup> /h | A       |
|                         | 0,0                 | 860,0             | 6,5     |
|                         | 5,0                 | 800,0             | 6,1     |
|                         | 10,0                | 743,6             | 5,8     |
|                         | 15,0                | 691,8             | 5,5     |
|                         | 20,0                | 642,0             | 5,2     |
|                         | 25,0                | 576,1             | 4,8     |
|                         | 30,0                | 464,4             | 4,1     |
|                         | 35,0                | 318,8             | 3,3     |
| 40,0                    | 171,0               | 2,7               |         |
| 46,0                    | 0,0                 | 2,2               |         |

Static Pressure: 1 mm H<sub>2</sub>O = 0,04in H<sub>2</sub>O = 9,8 Pa  
Air Flow Rate: 1 m<sup>3</sup>/h = 0,59 cfm

