

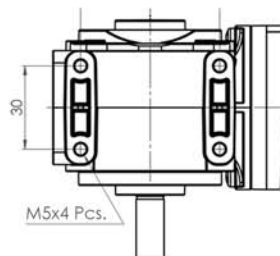
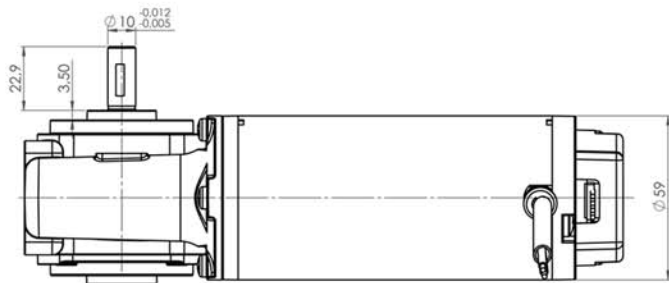
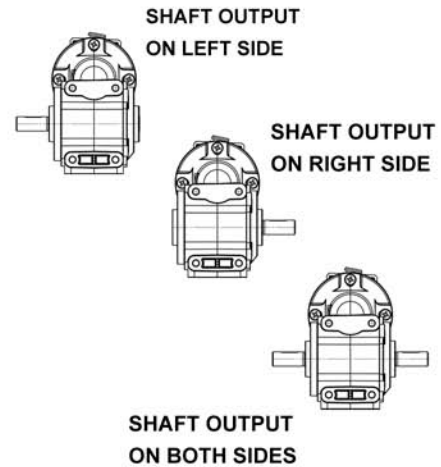
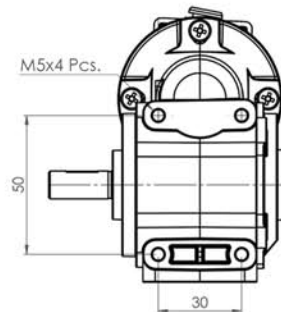
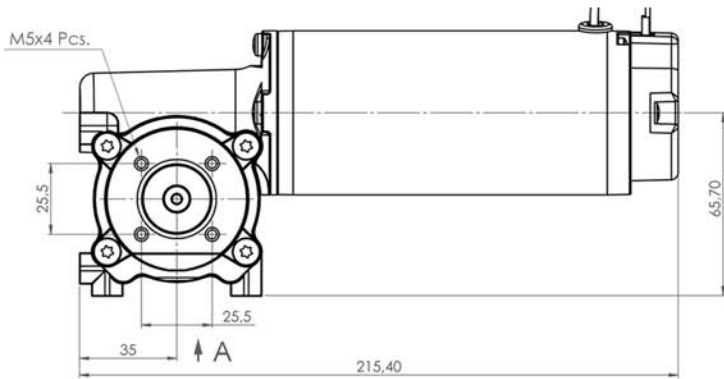
DC Motor



- High precision brushed DC motor
- Long term reliable operation
(Over 1M open-close cycles with 90 kg single leaf - 180 kg double leaves)
- Galvanized steel motor housing, aluminium gearbox housing
- Noiseless and reliable gearbox
- Shaft with ball bearings
- Deviant shaft length and diameter, shaft on right side, left side or both sides
- Different cable orientation options
- Incremental encoder 32 to 1024 PPR, 2 or 3 channel
- Sintered metal pulley (STD-16 teeth) or/and brake options

Technical Data

| Motor Code | Nominal voltage VDC | Nominal power W | No load speed rpm | Nominal speed rpm | Nominal current A | Nominal torque Nm | Operating temperature °C | Gear ratio i | Weight kg | Encoder (5VDC) PPR | Cable output |
|------------|------------------------|--------------------|----------------------|----------------------|----------------------|----------------------|-----------------------------|-----------------|--------------|-----------------------|--------------|
| 6401425 | 24 | 100 | 230 | 202 | 4,9 | 3 | -40..+50 | 15:1 | 2,3 | 100 | |
| 6401427 | 24 | 100 | 230 | 202 | 4,9 | 3 | -40..+50 | 15:1 | 2,3 | 100 | |
| 6401428 | 24 | 100 | 115 | 108 | 3,6 | 3,5 | -40..+50 | 30:1 | 2,3 | 100 | |



Wiring Diagrams

| CABLE CONNECTIONS | |
|-------------------|--------|
| Cable Color | Spec. |
| Red | (+) |
| Black | (-) |
| Encoder | |
| Black | GND |
| White | Ch A |
| Red | DC +5V |
| Green | Ch B |

